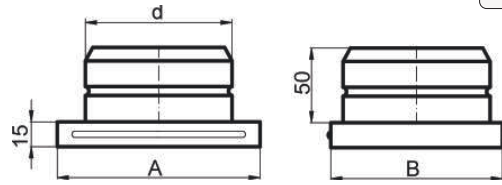
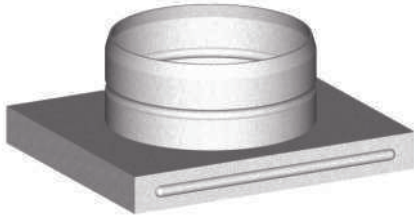


SLIKA

DIMENZIJE

1. KASETA KDP

KDP

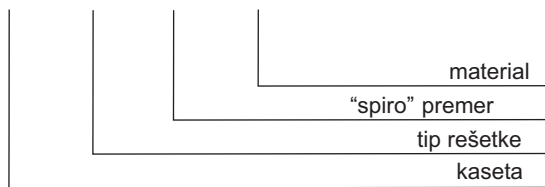


Tip rešetke	K1 - Kz1	K2 - Kz2	K3 - Kz3	K4 - Kz4	K5 - Kz5
A	166	166	216	301	456
B	106	141	141	166	166
d "spiro"	100-110	100-150	100-150	100-150	100-150
teža [kg]	0.20	0.25	0.35	0.55	0.60

OZNAKA PROIZVODA

MATERIAL

KDP - x / d - a



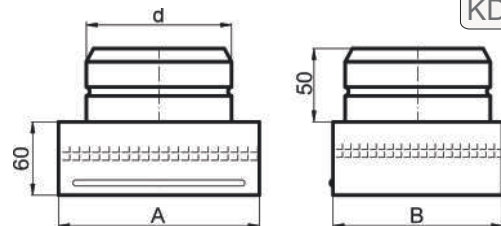
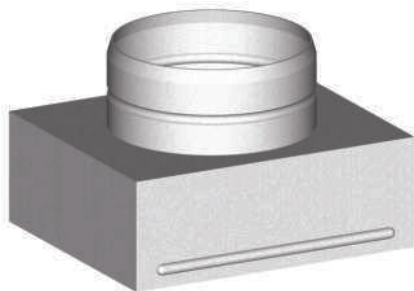
Namembnost	W	W	W - ventilacija
	O	O	O - ogrevanje zraka
Material	CH	-	CH - nerjaveče jeklo
	-	OC	OC - pocinkana pločevina

SLIKA

DIMENZIJE

2. KASETA S FILTROM KDP/F

KDP/F

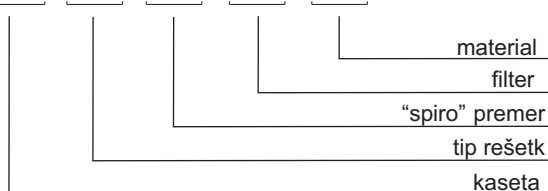


Tip rešetk	K1 - Kz1	K2 - Kz2	K3 - Kz3	K4 - Kz4	K5 - Kz5
A	166	166	216	301	456
B	106	141	141	166	166
d "spiro"	100-110	100-150	100-150	100-150	100-150
teža [kg]	0.40	0.50	0.70	0.80	0.95

OZNAKA PROIZVODA

MATERIAL

KDP - x / d / FW - a

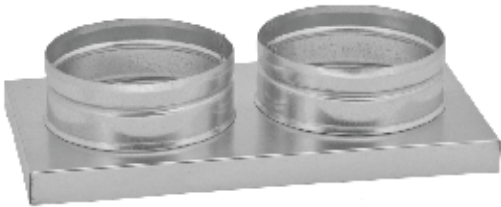


Namembnost	W	W	W - ventilacija
	O	O	O - ogrevanje zraka
Material	CH	-	CH - nerjaveče jeklo
	-	OC	OC - pocinkana pločevina

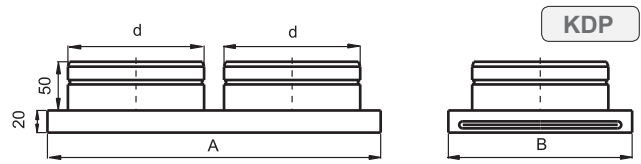
Kasete

SLIKA

3. KASETA/DVOJNA KDP



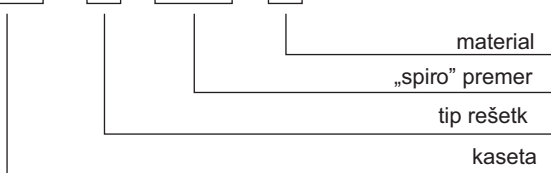
DIMENZIJE



Tip rešet	K4 - Kz4	K5 - Kz5
A	301	456
B	166	166
d "spiro"	100-125	100-150
Teža [kg]	0.63	0.68

OZNAKA PROIZVODA

KDP - **x** / **2x d** - **a**



MATERIAL

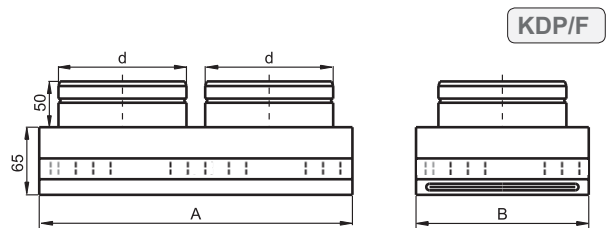
Namembnost	W	W	W - ventilacija
	O	O	O - ogrevanje zraka
Material	CH	-	CH - nerjaveče jeklo 1.4301
	-	OC	OC - pocinkana pločevina

SLIKA

4. KASETA S FILTROM/DVOJNA KDP/F



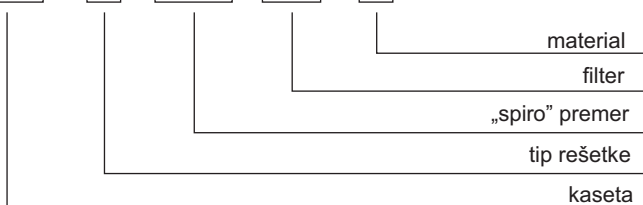
DIMENZIJE



Tip rešetke	K4 - Kz4	K5 - Kz5
A	301	456
B	166	166
d "spiro"	100-125	100-150
Weight [kg]	0.63	0.68

OZNAKA PROIZVODA

KDP - **x** / **2x d** / **FW** - **a**

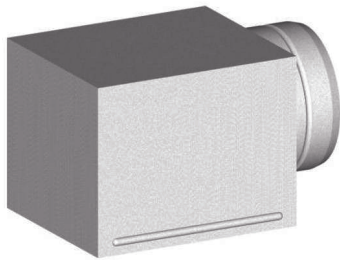


MATERIAL

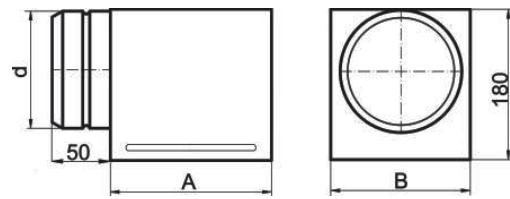
Namembnost	W	W	W - ventilacija
	O	O	O - ogrevanje zraka
Material	CH	-	CH - nerjaveče jeklo 1.4301
	-	OC	OC - pocinkana pločevina

SLIKA

5. BOČNA KASETA KDB



DIMENZIJE

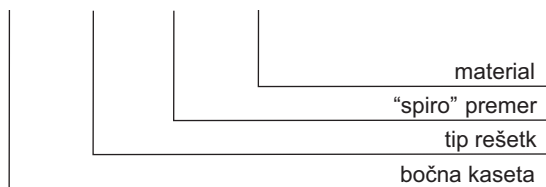


KDB

Tip rešetk	K1 - Kz1	K2 - Kz2	K3 - Kz3	K4 - Kz4	K5 - Kz5
A	166	166	216	301	456
B	106	141	141	166	166
d "spiro"	100-110	100-150	100-150	100-150	100-150
teža [kg]	0.50	0.70	0.85	1.15	1.50

OZNAKA PROIZVODA

KDB - x / d - a

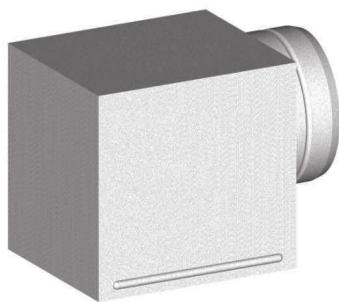


MATERIAL

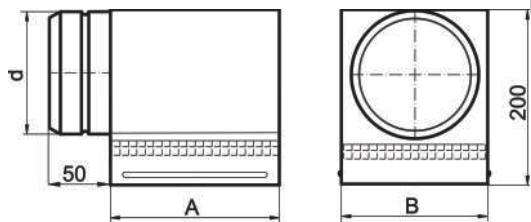
Namembnost	W	W	W - ventilacija
	O	O	O - ogrevanje zraka
Material	CH	-	CH - nerjaveče jeklo
	-	OC	OC - pocinkana pločevina

SLIKA

6. BOČNA KASETA S FILTROM KDB/F



DIMENZIJE

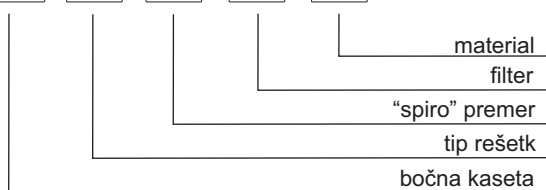


KDB/F

Tip rešetk	K1 - Kz1	K2 - Kz2	K3 - Kz3	K4 - Kz4	K5 - Kz5
A	166	166	216	301	456
B	106	141	141	166	166
d "spiro"	100-110	100-150	100-150	100-150	100-150
teža [kg]	0.55	0.75	0.90	1.20	1.60

OZNAKA PROIZVODA

KDB - x / d / FW - a



MATERIAL

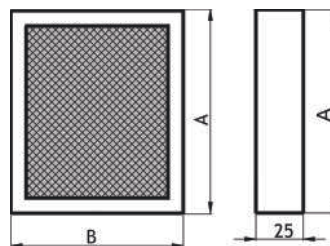
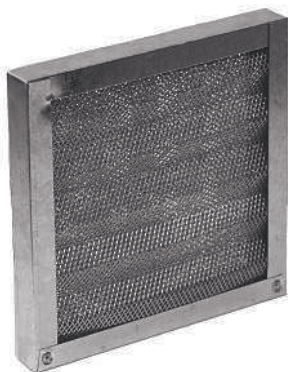
Namembnost	W	W	W - ventilacija
	O	O	O - ogrevanej zraka
Material	CH	-	CH - nerjaveče jeklo
	-	OC	OC - pocinkana pločevina

SLIKA

DIMENZIJE

7. KOVINSKI FILTER FM

FM



Tip rešetk	K1 - Kz1	K2 - Kz2	K3 - Kz3	K4 - Kz4	K5 - Kz5
A	162	162	212	297	452
B	102	137	137	162	162
teža [kg]	0.45	0.55	0.80	0.90	1.20

OZNAKA PROIZVODA

MATERIAL

FM - a



Namembnost	W	W - ventilacija
	O	O - ogrevanje zraka
Tip filtra	M	M - kovinski

FM - delovna temperatura do 300 °C

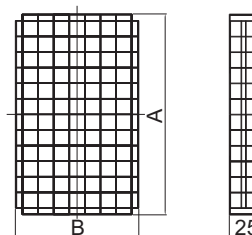
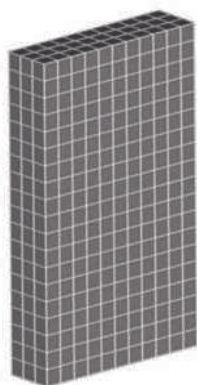
SLIKA

DIMENZIJE

8. FILTER ZA KASETE FW

FW

FW



Tip rešetk	K1 - Kz1	K2 - Kz2	K3 - Kz3	K4 - Kz4	K5 - Kz5
A	162	162	212	297	452
B	102	137	137	162	162
teža [kg]	0.10	0.10	0.12	0.15	0.20

OZNAKA PROIZVODA

MATERIAL

FW - a



Destination	W	W - ventilacija
	O	O - ogrevanje zraka
Tip filtra	W	W - vlaknasti

FW - delovna temperatura do 120 °C